

YEAR IN REVIEW

2021

(JULY 01, 2020– JUNE 30, 2021)







# FRASER VALLEY WATERSHEDS COALITION

Registered Society # 810236273 RR0001  
#1 45950 Cheam Avenue., Chilliwack BC V2P 1N6  
fvwc.ca | 604-791-2235

## We Are

A registered charity, governed by a volunteer board of directors.

## We Believe

Healthy watersheds provide the foundation for vibrant healthy communities!

## We work

On environmental projects designed to conserve and restore watersheds that provide benefits to the community. We have a strong regional focus in the Fraser Valley, British Columbia, Canada.

## We Value

- Integration
- Collaboration
- Action
- Conservation & Restoration
- Inclusiveness
- Scientific & Traditional Knowledge
- Respect

## Our Team

We are professionals who work with communities, universities, volunteers, Local, Provincial and Federal governments, First Nations and other non-profit organizations.

# PROGRAM DIRECTOR'S MESSAGE

2021 marks both an incredibly challenging and rewarding year. With the priority focused on maintaining public health orders to keep staff, volunteers, partners and communities safe, the FVWC was able to continue its conservation work, keep current staff employed during uncertain times, and was also able to hire additional staff who were impacted by COVID-19. This was achieved through valued partnerships with our regional environmental organization partners and through the economic stimulus recovery funds—putting the spotlight on the “Green / Blue Economy. A future towards resilient watersheds and people.”

In a time of extreme unknowns, the FVWC board and leadership team doubled down to continue our Human Resources Review—assessing our leadership staff to National Occupational Classifications, Charitable Sector and Regional Sector.

FVWC participated as a partner in the Healthy Watersheds Initiative through funding from BC Wildlife Federation, where staff had the opportunity to contribute to the Wetlands Ecosystem Services Protocol for the Georgia Basin; pursue Indigenous and Cultural Awareness Training and UNDRIP familiarization. Thanks to its partners and funders, FVWC continues to grow its understanding of Diversity and Inclusion.

The 2021 Wally Hall Jr. Memorial Steelhead Fishing Derby engagement was inspiring! Registrants of this derby tripled and gained significant support from our local community raising over \$30,000 in grassroots fundraising efforts to go back into river stewardship. Well-done and thank you for entrusting FVWC to steward this river.

FVWC also continued to actively restore and enhance aquatic habitats and held steady to its restoration objectives. In addition FVWC expanded its watershed planning and education capacity. It is hoped as FVWC moves into 2022 it will be able to offer much more directed curriculum based watershed learning opportunities.

Natashia Cox

# TREASURER'S ANNUAL SNAPSHOT

Even though it was a full year of the COVID-19 pandemic, the FVWC had a successful financial year (ended June 30, 2021). MNP LLP, one of the largest full-service chartered accountancy firms in Canada, reviewed the finances of FVWC that comprise the statement of financial position, statement of operations, changes in net assets, and cash flows for the year by way of an organization level review-engagement. MNP concluded that the results of its operations and its cash flows for the year then ended in accordance with Canadian accounting standards for not-for-profit organizations. Of note, through project funding and donations, the Coalition exceeded last year's revenue to set another record high but a significant amount was shifted to deferred revenues for multi-year projects. This full organization review was undertaken to ensure transparency and increase efficiencies which are rooted in our commitment to our charitable accountability.

The Guaranteed Investment Certificates (GICs) which guarantee the original investment while offering a specific rate of return over a set time have proven to be a reliable, low-risk investment that allows the FVWC to earn some unrestricted revenue through the GICs' interest to support core organizational functions.

The organization participated in the Province's Healthy Watersheds Initiative which enabled staff to be employed during uncertain times. In addition, the staff team was temporarily grown which led to the development of the Education Program and watershed planning and policy work that can be utilized by all our communities.

David Urban

# ABOUT THE WATERSHED COALITION



**Our vision** is that healthy watersheds foster healthy and vibrant communities.

**Our mission** is to foster watershed stewardship in the Fraser Valley through:

- Science
- Collaboration
- Community support
- Active habitat/watershed/ecosystem restoration

**Our purpose** is to organize and participate in environmental projects designed to conserve, protect, and restore watersheds in the Fraser Valley. Increase community understandings about Fraser Valley watersheds by providing seminars and training on watershed management. undertake activities ancillary and incidental to the attainment of the aforementioned charitable purposes.



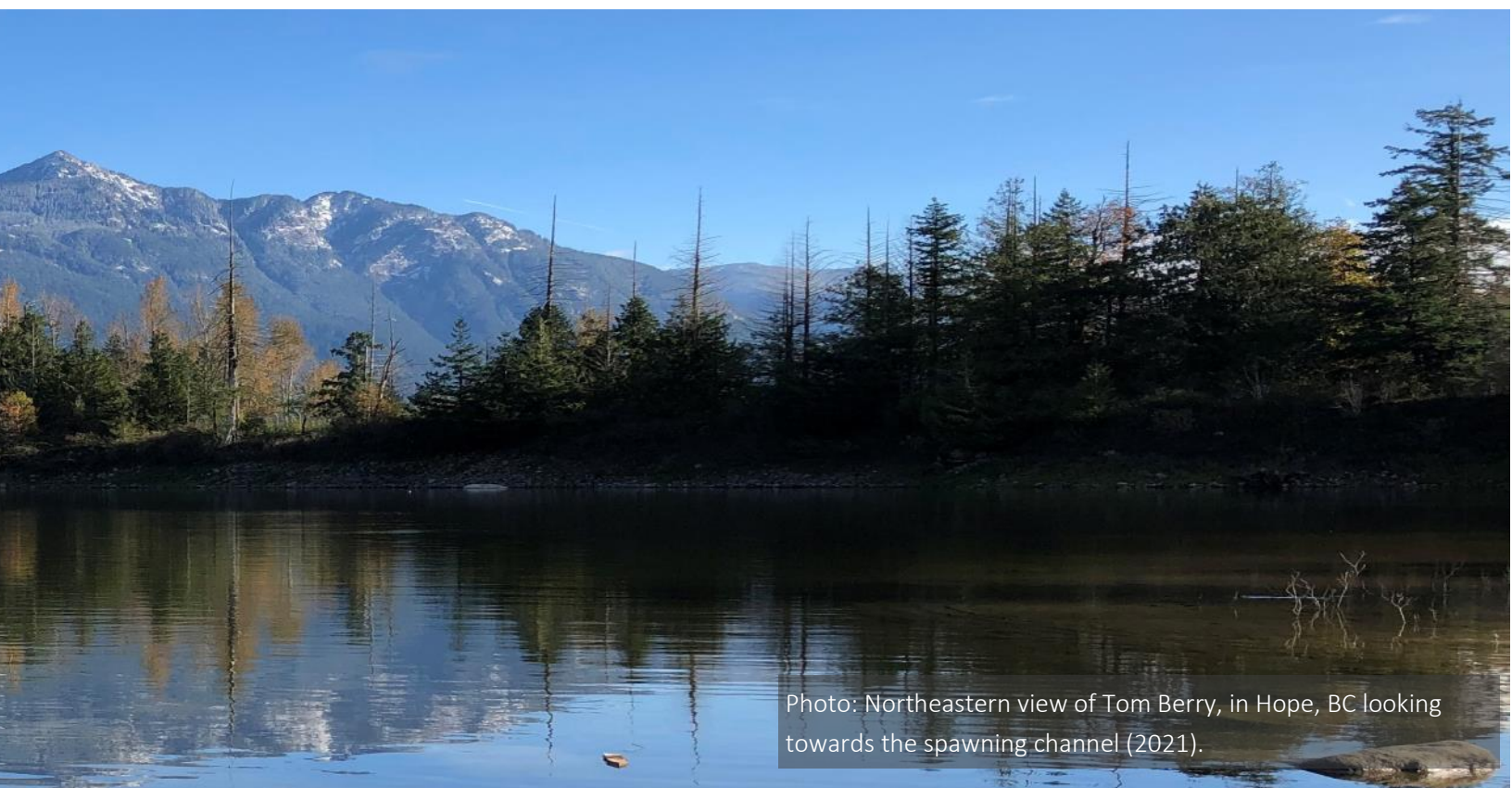


Photo: Northeastern view of Tom Berry, in Hope, BC looking towards the spawning channel (2021).

## A Brief History

- The FVWC was formed in 1997 under the fisheries renewal as a regional delivery agent. During this time, the FVWC facilitated and distributed millions of dollars each year to support regional fish habitat projects.
- In 2005 The FVWC became a registered Society, as a partnership between the Fraser Valley Regional District (FVRD) and the Fraser Valley Watersheds Coalition (FVWC) with technical support from Fisheries and Oceans Canada (DFO) Resource Restoration Unit and the University of the Fraser Valley (UFV).
- In 2010, the FVWC received Federal Charity status and expanded watersheds program and partners to include all levels of government, First Nations, community groups and academia to improve the health of watersheds in the Fraser Valley of B.C.

# ABOUT THE WATERSHED PROGRAM

The **vision** of the Watersheds Program is to restore and enhance watershed values and to increase environmental stewardship and understanding on the importance of local watersheds. Valuing a balanced approach, the Watershed Program consists of multiple inter-connected programs that help us work towards healthy watersheds.



**Habitat Restoration  
Enhancement & Compensation**  
“Improving our rivers, wetlands,  
forests and biodiversity”



**Environmental Monitoring, Mapping &  
Maintenance** “Taking nature’s pulse”



**Environmental Education & Outreach**  
“Inspiring and training people to care for  
watersheds”



**Watershed Planning** “Strategic planning  
of projects and programs to benefit nature  
and communities”



**Agriculture & Environment** “Finding  
mutual benefits to support agriculture and  
ecological values”

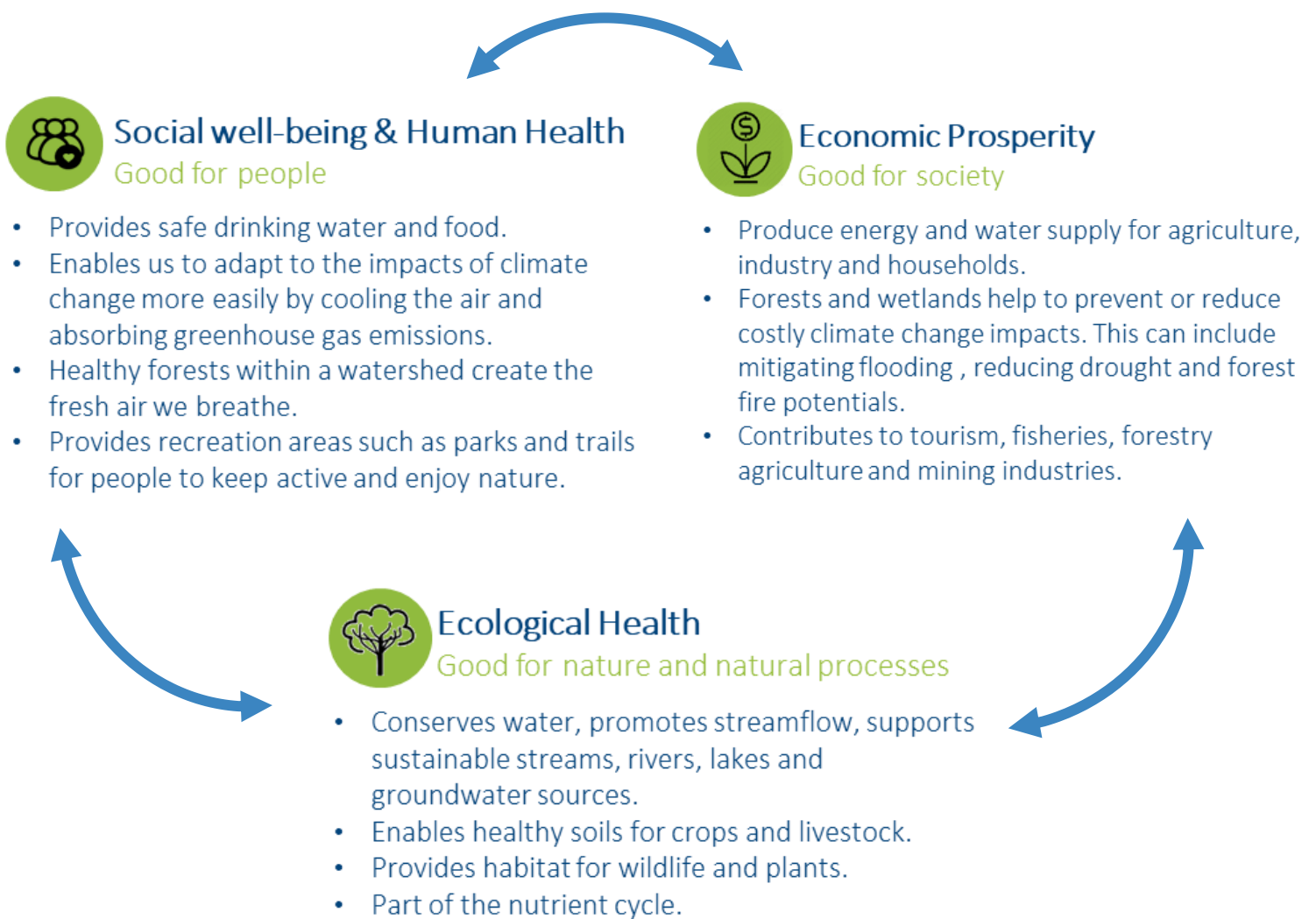


**Climate Change & Carbon Offsets** “Local  
solutions to reduce carbon footprint and  
global climate challenge”

# WHY WATERSHEDS MATTER

The Fraser Valley is comprised of a mosaic of landscapes. These landscapes include natural areas, such as mountains, rivers and lakes and non-natural areas, such as residential, commercial, industrial, agricultural lands, all with many stakeholders and vested community interests. As such, there are many natural and non-natural stresses placed on our watersheds.

Watersheds offer social, economic and environmental values. We believe healthy watersheds provide the foundation for vibrant, healthy communities. As local leaders in conservation, we take actions to conserve, restore and enhance watersheds and their values to benefit people and nature across the Fraser Valley, British Columbia.





# 2020-2021 AT A GLANCE



## Organization

COVID-19 impacts projects and operations-caused significant cancellation of volunteer and in-person events.

Was able to support and expand field staff to work throughout the year. Continued to maintain a year-round staff field team.

Continued to develop HR Strategic Community Plan.

HR Total Compensation Package Review began.

FVWC underwent an independent financial review engagement for the 2nd year.

Received a >\$30,000 donation! Thanks to the contributions from the Wally Hall Jr. Memorial Steel-head Fishing Derby.

Received 1<sup>st</sup> corporate donation from Molson-Coors.





Photo: Team beach seine in Nicomen Slough with DFO in Dewdney, BC (2021).

## Projects

Received >\$1 million in projects to restore, enhance and monitor salmon habitats in the Fraser Valley.



Completed **12** overarching projects (*all with many sub-activity components*). Developed **20** conceptual habitat restoration plans.



Monitored **7** waterways for fish use and water quality. Contracted team assessed **41** reaches for salmon habitat.



Planted **11,737** trees and shrubs (**27,137m<sup>2</sup>**). This is equivalent to **18,190** tons of CO<sup>2</sup> GHG. Removed/managed **36,362m<sup>2</sup>** of invasive plants.



Had **10** volunteers lend us their hands. Employed **2** full-time staff and **5** part-time staff.



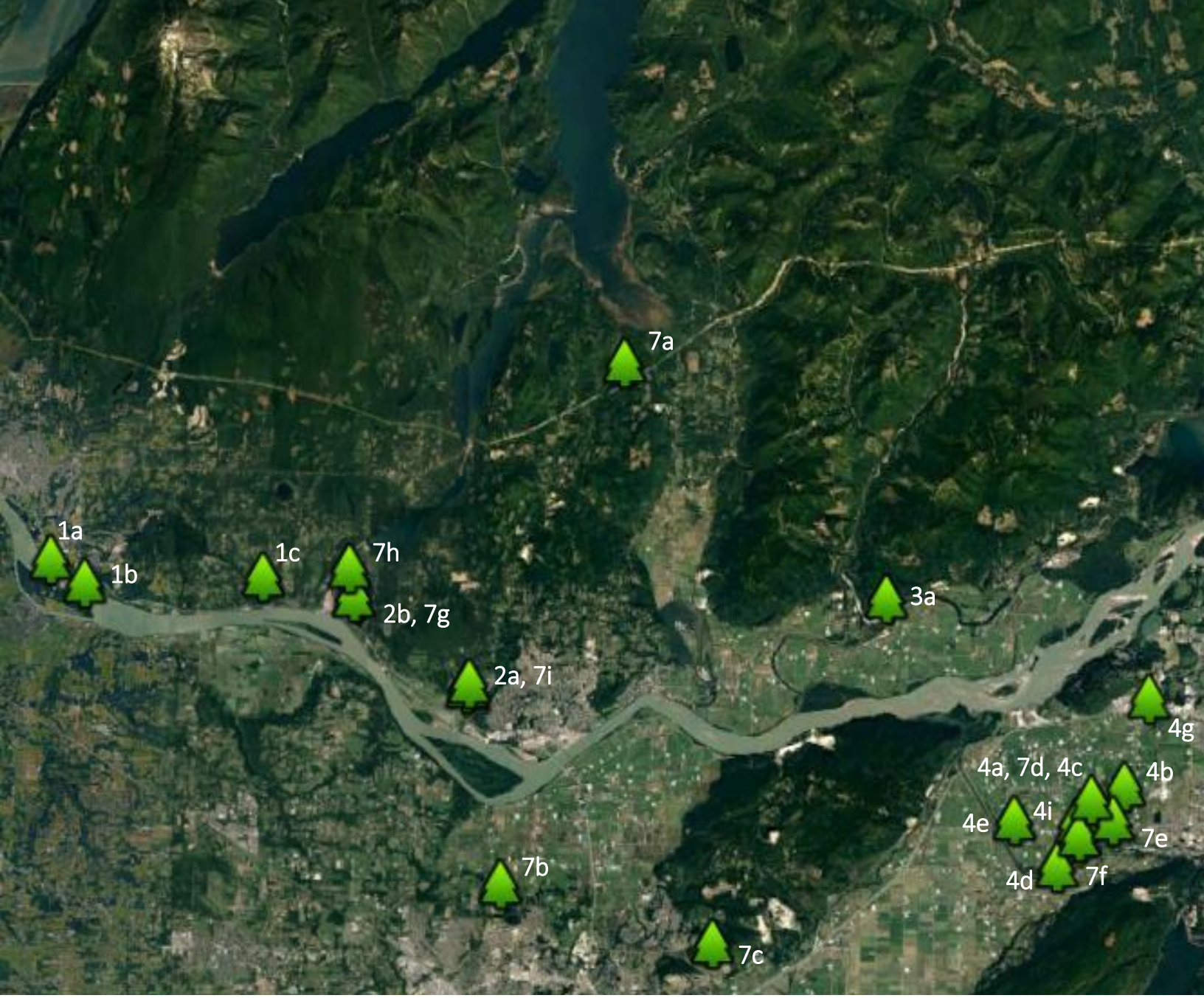
Created and Restored **5,000m<sup>2</sup>** salmon habitat, upgraded a rock weir to increase water flow to support Salish Sucker critical habitat.



Lead/participated in **1** community/ university presentations/delegations and learning.

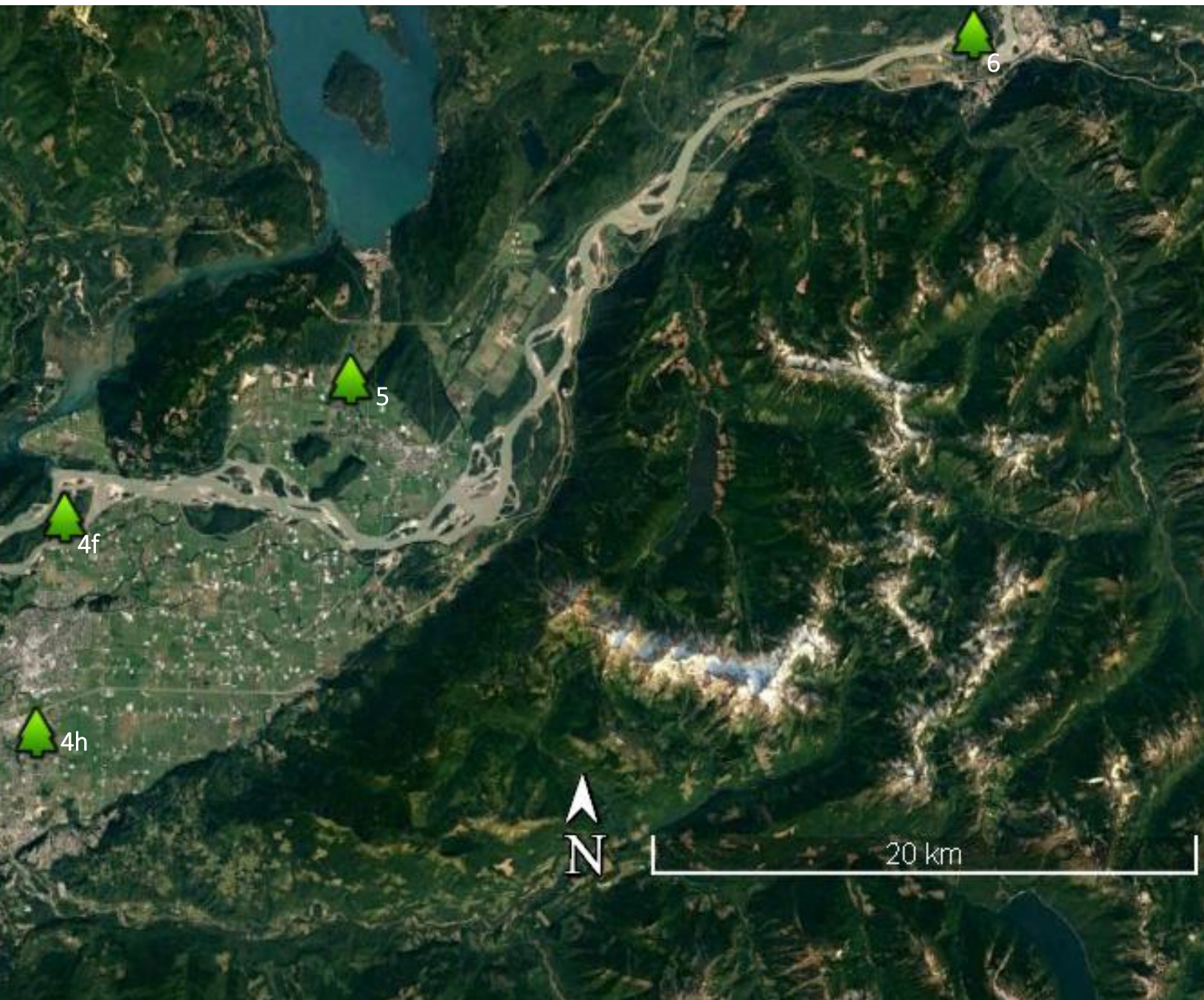


# 2021 PROJECTS ACROSS THE REGION



LANGLEY	MISSION	MAPLE RIDGE	ELECTORAL AREA C
<p><b>1. Kwantlen First Nation’s McMillan Island Bank Erosion Protection</b>                      Project—Offsetting Monitoring &amp; Maintenance.                      a. George’s Creek Aquatic Habitat                      b. McMillan Island East Riparian Area</p>	<p><b>2. MOTI HWY #7 Compensation</b>                      a. Silverdale West                      b. Stave River (Site 3)</p>	<p><b>1. Kwantlen First Nation’s McMillan Island Bank Erosion Protection Project—Offsetting Monitoring &amp; Maintenance</b>                      c. Whonnock Creek Aquatic Habitat</p>	<p><b>3. Heart of the Fraser</b>                      a. Nicomen Slough/ Norrish Creek Fan</p>





## CHILLIWACK

## DISTRICT OF KENT/AGASSIZ

## HOPE

### 4. Integrated Plan to Restore and Enhance Chilliwack Waterways for Aquatic Species at Risk

- a. Hooge Wetland
- b. Salwein Creek (Jackson Phillips Slough)
- c. Salwein Creek (East-West)
- d. Stewart Creek
- e. Sinclair Wetlands

- f. Bell Slough
- g. Atchelitz Slough
- h. Sardis Park—Carl Creek
- i. Horse Pasture

### 5. MOTI HWY #9-11 Compensation—Oregon Spotted Frog Habitat Enhancement

- 7. BCWF—Wetlands Workforce
  - a. Pike’s Pond (Mission)
  - b. Clearbrook Park (Abbotsford)
  - c. Lower Sumas Mountain Park (Abbotsford)
  - d. Hooge Wetland (Chilliwack)

### 6. Tom Berry

## REGIONAL

- e. Browne Creek Wetlands (Chilliwack)
- f. Trestle Channel (Chilliwack)
- g. Stave River (Site 3) (Mission)
- h. Stave River (Site 2) (Mission)
- i. Silverdale Creek Wetlands (Mission)



# WATERSHED PROGRAM/PROJECTS



Photo: South-view of Tom Berry Gravel pit during Fraser River freshet (2021).

Valuing a balanced approach, the Watershed Program consists of **6 inter-connected programs** that help us work toward healthy watersheds. This years active projects are identified under each overarching program pillar (see table below).

## Watersheds Program

## Active Projects



Habitat Restoration, Enhancement, & Compensation

- MOTI HWY #7 Compensation;
- MOTI HWY #9-11 Oregon Spotted Frog Habitat Enhancement;
- Integrated Plan to Restore and Enhance Chilliwack Waterways to Support Aquatic Species at Risk;
- Kwantlen First Nation’s McMillan Island Bank Erosion Protection Project—Offsetting Monitoring and Maintenance;
- Tom Berry;
- BCWF’s Wetlands Workforce;
- Heart of the Fraser



Environmental Monitoring, Mapping & Maintenance

- MOTI HWY #7 Compensation;
- MOTI HWY #9-11 Oregon Spotted Frog Habitat Enhancement;
- Integrated Plan to Restore and Enhance Chilliwack Waterways to Support Aquatic Species at Risk;
- Kwantlen First Nation’s McMillan Island Bank Erosion Protection Project—Offsetting Monitoring and Maintenance;
- Tom Berry;
- BCWF’s Wetlands Workforce;
- Heart of the Fraser





## Watersheds Program

## Active Projects



### Environmental Education & Outreach

- BCWF's Wetlands Workforce



### Watershed Planning

- Integrated Plan to Restore and Enhance Chilliwack Waterways to Support Aquatic Species at Risk;
- Tom Berry



### Agriculture & Environment

- Agriculture and Hobby Farms



### Climate Change & Carbon Offsets

- Integrated Plan to Restore and Enhance Chilliwack Waterways to Support Aquatic Species at Risk



Photo: Photo of the recently constructed channel at Silverdale Creek Wetlands West in Mission, BC (2021).



## MOTI HWY #7 OFFSITE COMPENSATION

**Project Summary:** As a part of the Ministry of Transportation and Infrastructure Highway #7 Widening Project, the purpose of this project was to foster a collaborative local approach to complete habitat compensation requirements with the goal to increase, restore, and enhance aquatic habitat and biodiversity. Habitat designs aimed to support rearing and overwintering salmon and support improved riparian floodplain forests. This is a multi-year project that has a variety of phases including: Phase 1 Build-Out (Stave Site #3 and Silverdale West 1), additional offsetting designs, effectiveness monitoring, and future additional offset build-outs.

### 2020-2021 Summary of Works Completed:

1. Silverdale West 1—FVWC constructed a new off-channel habitat on the west side of Silverdale Creek. This portion of the project transformed a seral, reed canary grass field into aquatic channels that were then replanted with native vegetation. This work resulted in **3,388 m<sup>2</sup> of new aquatic habitat** enhanced with **65 large pieces of rootwads** and **2,763 m<sup>2</sup> riparian habitat, with 1,770 individual plants** (of which 460 were trees and represent 1,426 tons of carbon drawdown annually).
2. Stave Site 3 is the lower site. With respect to this compensation project—our objective was to add additional native plants to support the constructed channel, built in 2014, resulting in an additional **5,091m<sup>2</sup> of new riparian habitat**.
3. FVWC developed conceptual designs for additional offsetting build-outs.

**Funded by** Ministry of Transportation and Infrastructure, and **supported by** Ducks Unlimited Canada, Stave Valley Salmonid Enhancement Society, District of Mission, Matsqui First Nation, Kwantlen First Nation, Leq'a:mel First Nation, and Department of Fisheries and Oceans Canada.





Photo: Team monitoring for fish and water quality in Maple Ridge BC for Kwantlen First Nation (2021).

## KFN'S MCMILLAN ISLAND BANK EROSION PROTECTION PROJECT—OFFSETTING MONITORING & MAINTENANCE



**Project Summary:** The purpose of this project is to support Kwantlen First Nation with aspects of offsetting monitoring and maintenance to ensure constructed habitats support culturally, recreationally, and aboriginally (CRA) important fish species and floodplain ecology as intended. Offsetting habitats include:

- McMillan Island riparian and cattle exclusion.
- George's Creek riparian and aquatic habitat supporting CRA fish species.
- Whonnock Creek riparian and aquatic habitat supporting CRA fish species.

### 2020-2021 Summary of Works Completed:

1. Continued monitoring for fish, water quality and aquatic invertebrates at George's Creek and Whonnock Creek.
2. Maintained previous planting and bioengineering efforts and protected plantings against wildlife herbivory at all sites.
3. Controlled invasive blackberry from riparian areas across all sites.
4. Continued monitoring McMillan Island riparian cattle exclusion fencing for functionality.

All of these constructed habitats are currently functioning as intended and are achieving  $\geq$  80% plant survivorship and are showing signs of natural regeneration.

Funded by Kwantlen First Nation through Indigenous Services Canada

★ [Click here to learn more about this project.](#)





Photo: FVWC team completing a WESP assessment in Langley, BC as part BC Wildlife Federation's Wetlands Workforce (2021).



## BCWF'S WETLANDS WORKFORCE

**Project Summary:** FVWC was one of many host partners of the BC Wildlife Federation's Wetlands Workforce. This workforce is a collaborative effort between conservation organizations and First Nations to provide employment opportunities to young people and minorities affected by COVID-19; improve riparian and wetland habitats through maintenance and enhancement activities; and improve wetland management and inventories by supporting a province-wide wetland monitoring initiatives

### 2020-2021 Summary of Works Completed:

This work spans two FVWC fiscal years (2021, and 2022) - 2021 covers Spring until the end of June.

1. Completed site maintenance and planting at past FVWC restoration sites in Mission (Stave River & Silverdale Creek Wetlands) and Chilliwack (Hooge Wetlands, Browne Creek Wetlands & Trestle Channel) — maintained over 22,000m<sup>2</sup> of habitat by removing invasive species and garbage.
2. Monitored for fish, water quality, and aquatic invertebrates at past FVWC restoration sites—caught over 4,000 fish across 3 restoration sites!
3. Supported province-wide wetland monitoring initiatives by completing Wetland Ecosystem Services Protocol (WESP) and Wetland Predictive Mapping at 4 wetlands including Pike's Pond (Mission, BC), Hooge Wetland (Chilliwack, BC), Clearbrook Park (Abbotsford, BC), Lower Sumas Mountain Park (Abbotsford, BC) and Browne Creek Wetlands (Chilliwack, BC).

**Funded by** BC Government and **administered by** the Real Estate Foundation of BC, in partnership with Watersheds BC. **Supported by** BC Wildlife Federation and Wetlands Workforce.





Photo: Failing Beaver box removal and channel excavation at west side of Horse Pasture (Salwein) complex (2021) photo courtesy of J.Bulcock DFO.

## AN INTEGRATED PLAN TO RESTORE AND ENHANCE CHILLIWACK WATERWAYS TO SUPPORT AQUATIC SPECIES AT RISK



**Project Summary:** This project is a collaborative effort to enhance, restore and promote shared conservation values in the Chilliwack-Vedder River Watershed. Year 2 (fiscal 2020-2021) focused on creating conceptual designs and refining assessment matrices, restoration and habitat improvement, completing monitoring, information verification, assessments and adaptive feedback.

### 2020-2021 Summary of Works Completed:

1. Completed additional conceptual designs and refined assessment matrices creating 15 potential restoration and enhancement opportunities.
2. Completed restoration and habitat improvement at 5 sites in the Chilliwack-Vedder River Watershed including Sinclair Wetlands/Lewis-Lateral Slough, Salwein Creek, Hooge Wetland, and Stewart Creek. Controlled over 3,000m<sup>2</sup> of invasive species such as Himalayan blackberry, white sweet clover, common tansy and canola. That's the size of two hockey rinks!
3. Completed monitoring and assessments at 6 sites in the Chilliwack-Vedder River Watershed to gather habitat information to support adaptive management strategies and future enhancement opportunities. Sites include Bell Slough, Sardis Park—Carl Creek West, Atchelitz Creek, Hooge Wetland, Horse Pasture, Lewis Lateral Slough. Data and information collected includes water quality, native vegetation growth and regeneration, and invasive species extent.

**Funded by** Canada's Nature Fund for Aquatic Species at Risk, Environmental Damages Fund, Pacific Salmon Foundation and donations from Wally Hall Jr. Memorial Steelhead Fishing Derby. **Partnered with** DFO's Resource Restoration Unit, City of Chilliwack, Stó:lō Research Management Centre, and People of the River Referrals Office.





## HEART OF THE FRASER

**Project Summary:** This is a multi-year restoration project to collaboratively enhance, restore and promote shared conservation values in the Heart of the Fraser. Specifically, this project will enhance and restore juvenile and adult Chum and Chinook salmon, improve ecological resiliency in the area and work to support the recovery of critical food sources for the southern resident orca whale population.

### 2020-2021 Summary of Works Completed:

1. 2021 focused on preliminary investigations, planning and assessments to address risks, benefits and information gaps at 3 locations: Norrish Creek, Nicomen Slough, and Skumulapsh Slough. The question was asked “how far upstream in tributaries do juvenile Chinook Salmon travel to rear and grow before travelling out to the ocean? FVWC and DFO completed multiple beach seines in Nicomen Slough to determine how far upstream juvenile Chinook Salmon could be found.
2. Nicomen Slough at the Norrish Creek Fan is a highly variable system and also has high habitat value for spawning salmon. The original plan was to alter the Norrish Creek Fan in a way that would reduce backwatering in the Nicomen Slough to improve water quality and juvenile chinook access into the upper slough system. After considerable review and discussions, by consensus, it was decided that the Norrish Creek fan is wild, has significant biological and ecological value and should not be altered. Additionally, there was uncertainty whether drawing down Nicomen Slough water levels will attain the improved water quality conditions of the slough.
3. A new “blue line concept” was created to create a side channel to Nicomen Slough that may reduce the backwatering effect from Norrish Creek Fan and keep it “wild”.

**Funded by** Department of Fisheries and Oceans Canada — Coastal Restoration Fund, and **supported by** Sts’ailes First Nation, Leq’a:mel First Nation, Sq’ewlets First Nation, Ducks Unlimited Canada, Ministry of Forests, Lands, Natural Resource Operations and Rural Development, Hemmera, Harrison Salmon Stronghold, and Department of Fisheries and Oceans Canada — Resource Restoration Unit.

★ [Click here to learn more about this project](#)





Photo: Constructing the road culvert crossing for the permanent connection at Tom Berry. (March 2021)

## TOM BERRY



**Project Summary:** This restoration project began in 2017 with its primary focus on addressing the stranding of salmonids that enter the pit during the Fraser River freshet. Salmonids remain trapped in the pit when water levels recede in the late summer. No longer connected to the Fraser River, the aquatic conditions in the pit become unsuitable for salmonid survival (with high water temperatures, low dissolved oxygen, and predation from invasive aquatic species). This project aims to restore juvenile salmon connectivity to the Fraser River and support the recovery of the southern resident orca whale population.

### 2020-2021 Summary of Works Completed:

1. The main project goal for 2021 was to construct a permanent outflow channel connecting Tom Berry gravel pit to Bristol Slough and it is still under construction into 2022.
2. A new archaeological site was found and FVWC is working with Stó:lō First Nation and archaeologists to uncover artifacts and keep cultural heritage intact.
3. The spawning channel bridge was realigned to fall below freshet water levels and remain above water the rest of the year to avoid damage during high freshet flows.
4. Monitored for fish and water quality. Minnow trapping results saw over 1,000 native fish including Coho Salmon, rainbow trout, peamouth chub, redbreast shiner and largescale sucker to name a few!
5. Re-planted the spawning channel constructed in 2019 with over 1,800 native plants!
  - a. Additionally, a species of dogbane was planted to promote critical habitat for the endangered Dun skipper, a species of moth that has a known population across the Fraser River in Yale, BC.

**Funded by** Department of Fisheries and Oceans — Coastal Restoration Fund and HCTF and **supported by** Ministry of Transportation and Infrastructure, District of Hope, AdvantageHope, Hope Mountain Centre for Outdoor Learning, Stó:lō First Nation, Fisheries and Oceans Canada, BCIT, Hope Communities in Bloom, and FVRD.





Photo: Planted willow along a section of McCallum ditch in Agassiz, BC as a part of an on-going project to enhance Oregon spotted frog habitat (2021).



## MOTI HIGHWAY #9-11 OREGON SPOTTED FROG HABITAT

**Project Summary:** As part of the Ministry of Transportation and Infrastructure highway shoulder widening project, the FVWC is enhancing McCallum ditch to support the critical functioning zone for the Oregon Spotted frog and to increase biodiversity.

### 2020-2021 Summary of Works Completed:

1. Maintained the planting area by removing invasive species such as Himalayan blackberry.
2. Maintained the planting area by pruning native vegetation to promote healthy growth.
3. Monitored water quality, fish, amphibian egg masses, and stream discharge to ensure the habitat is functioning as intended as critical habitat for Oregon spotted frog.
  - a. Minnow trapping data show that the stream is mostly being used by three-spine stickleback.
  - b. Amphibian egg mass surveys show that this section of McCallum Ditch is being used by Northwestern salamander and red-legged frog.

**Funded by** Ministry of Transportation and Infrastructure. **Supported by** Mielle's Organic Farm.





Photo: In accordance with the AEM code, this watercourse is protected with riparian vegetation and fencing to keep livestock and the stream healthy.

## HOBBY FARMS



In our Agriculture and Environment Program Pillar we are:

1. Finding mutual benefits to support agriculture and ecological values.
2. Helping farmers improve on farm practices to reduce environmental risk.
3. Mitigating effects of climate change through some types of on farm improvements

### Project Summary:

This project focuses on identifying if there are limitations, gaps or barriers preventing farm-owners from acting on best practices. Farms are dynamic and have specific needs and functions related to their local environment. The long-term wellbeing of farms and animals depends on good quality soil, water and natural resources. To conserve these resources good management needs to include safe-guarding the environment. An effective way to accomplish this broad goal is through successful environmental farm planning and implementing good practices. **We review the Code of Practice for Agricultural Environmental Management (AEM Code) and look at three program areas:**

- Water Management
- Waste Management.
- Pasture Management

**Funded by** Habitat Conservation Trust Foundation. **Supported by** Ministry of Agriculture, Horse Council BC., LEPS.





Photo: FVWC's Watershed Educator teaching about aquatic bugs at an outdoor learning event (2021).

We believe connecting with our communities through meaningful, fun, and hands-on learning activities is critical for building understanding and appreciation for nature and biodiversity.

COVID-19 posed a challenge to education and outreach in 2020 and 2021. Education and outreach are important components of our organization and we typically depend on events such as volunteer plantings. COVID-19 has taught us that education is still possible despite a pandemic and we shifted to more of an **online presence** through educational social media posts.

In the Spring of 2021 we hired a **Watershed Educator** for the first time in FVWC history made possible through BCWF's Wetlands Workforce supported by the Healthy Watersheds Initiative administered by the Real Estate Foundation of BC and Watersheds BC with financial support from the Government of BC as part of their \$10-billion COVID-19 response.

Our Watershed Educator began developing our **Environmental Education and Outreach** with the intention of delivering hands-on, nature-based, outdoor learning modules in the **Fall of 2021**, pending COVID-19 restrictions and protocols.



# “INSPIRING & EDUCATING PEOPLE TO CARE FOR WATERSHEDS”



As part of FVWC’s Watershed Program, the vision of **Environmental Education and Outreach** is to “*inspire and educate people to care for watersheds,*” by connecting with a variety of community and public groups to increase understanding and action towards enhancing watershed stewardship.

Our Environmental Education & Outreach consists of **3 main objectives**:



**Watershed Discovery** consists of 3 main delivery methods:

- a) Virtual exploration
- b) In-classroom
- c) Outdoor learning events



**Stewardship Socials**

- In development



**Professional Development & Watershed Webinars**

- In development

★ [Click here to learn more.](#)

# GET INVOLVED

## WE BELIEVE EVERY PERSON CAN CONTRIBUTE TOWARDS POSITIVE CHANGE!

WE HAVE A VARIETY OF WAYS YOU CAN BECOME INVOLVED IN OUR ORGANIZATION TO HELP US ACHIEVE OUR VISION OF HEALTHY WATERSHEDS AND COMMUNITIES. WE ENCOURAGE YOU TO DECIDE WHAT WORKS BEST FOR YOU.

- **As a Believer** – Supporting what we believe in by taking small actions towards healthier watersheds and communities on your own time. This can include, thinking about your own home/property and lifestyle and modifying or enhancing what you do in your own life! There are many little things you can do that help us and yourself steward our natural, personal and community. Want to know more about why we do what we do -consider reading more about [Why it Matters](#) and [What we are doing!](#)
- **As a Friend** – Supporting us on social media, highlighting our upcoming projects and opportunities and sharing with your friends and family about what we do (and why) and encouraging people to become members is a great way to help us continue working towards and sharing about our goals and relevance. Will you consider liking/following us on [Facebook](#) and [instagram](#)?
- **As a Participant** – If you are an avid angler, we are the recipient of the registration funds raised through the Wally Hall Jr. Memorial Steelhead Fishing Derby.
- **As a Volunteer** – Assisting us when we have volunteer call-outs. There is no cost to becoming a volunteer and all that is required is [subscribing to our mailing online list](#). Once subscribed, you will receive updates through email about upcoming events, volunteer opportunities, job opportunities and project updates.
- **As a Member** – [Becoming a member](#) is the next step up from volunteering. As a paid member (\$10 per year per person), you still receive all the volunteer opportunities and emails, however you now have the ability to contribute both financially towards the watershed program goals and at the Annual General Meeting you can elect members to become directors of the governing board and/or elect yourself.
- **As a Director** – If you are a member in good standing, you can become elected to the Board. This is a fantastic way to meet like-minded people and contribute to the strategic direction and internal governance of the organization. This has significantly more time commitment. You can read more about our [Directors and Leadership Team](#) and about our [years in review and accountability](#).

**As a Donor** – We rely on the contributions made to our organization which we then leverage and apply to meaningful on the ground actions. Will you consider making a single or monthly donation? We have a variety of ways you can donate and, as a charitable organization, you may be entitled to a tax receipt. You can read more about it here: <https://fvwc.ca/charitable-giving/> and you can view our charity profile on [Canada Helps](#). (\*If you choose to donate monies – please select 1. FVWC Watershed Program). You can also **Fund-raise on our behalf**, using Canada Helps.



# WALLY HALL JR. MEMORIAL STEELHEAD FISHING DERBY

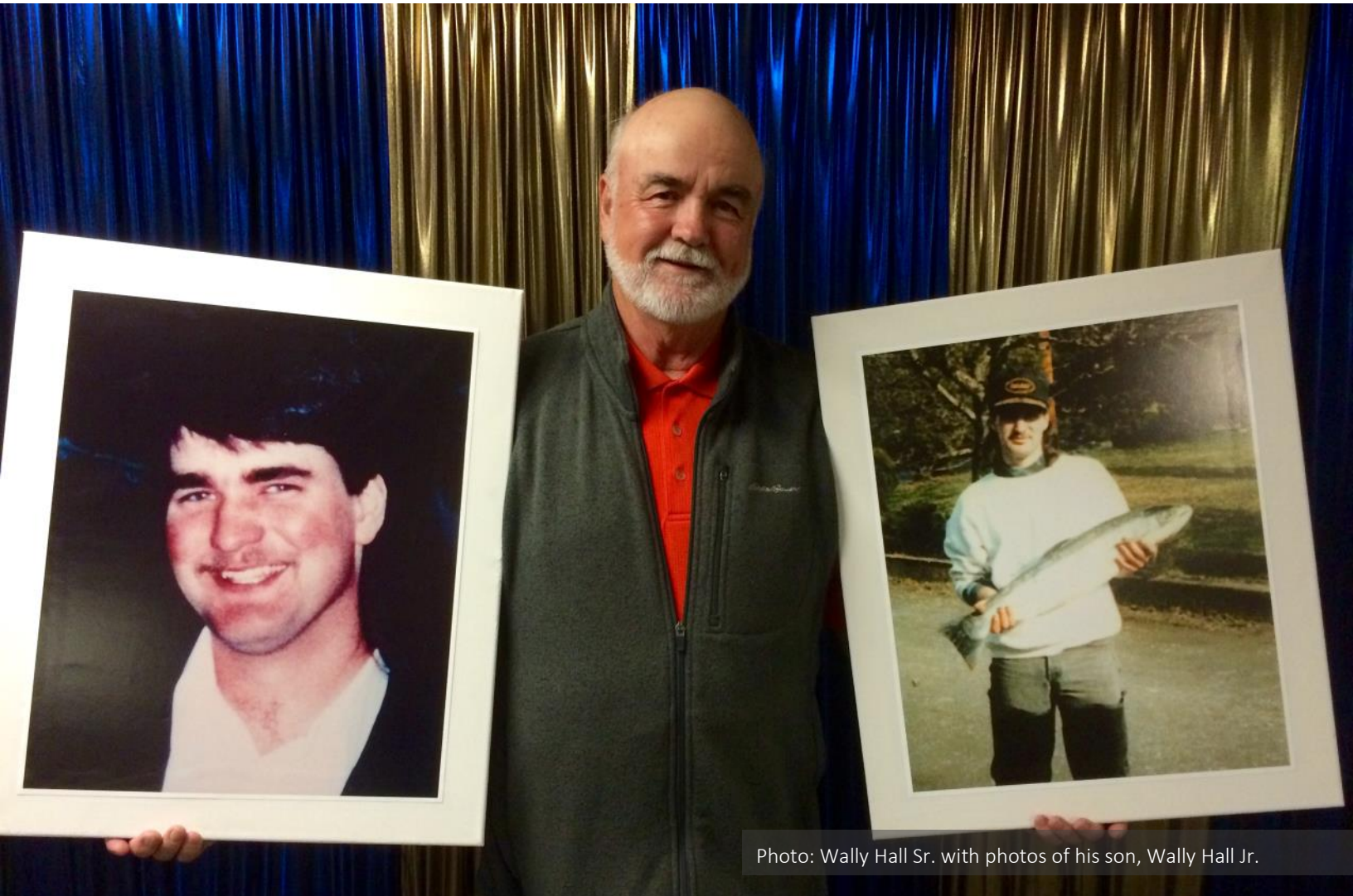


Photo: Wally Hall Sr. with photos of his son, Wally Hall Jr.

The [Wally Hall Jr. Memorial Steelhead Fishing Derby](#) is a tribute to Wally Hall Jr. and his family, who loved to fish and created many memories fishing along the Chilliwack/Vedder River.

The derby is organized and supported by Fred's Custom Tackle, Fishing with Rod, and the Chilliwack Fish and Game Protective Society and typically runs from December 01 to March 15 each year. Anglers pay a registration fee to participate and these fees are generously donated to the Fraser Valley Watersheds Coalition to continue stewarding and restoring the Chilliwack/Vedder River and key tributaries. The goal is to encourage our community to get outside, connect with each other and the river, and through fishing, contribute towards the river's conservation and well-being. While the derby started in 2000, donations to the FVWC began in 2014. In May of 2021, participants donated over \$30,000!

We welcome you to register and continue to fish the Chilliwack/Vedder River system, and become a part of this stewardship and memorial legacy!



# AWARDS AND RECOGNITIONS



**FRASER VALLEY  
WATERSHEDS  
COALITION**  
Healthy Watersheds, Healthy Communities

## Golden Shovel Award

Presented by John Vissers

*A recognition of a member, volunteer, partner, staff, contractor and/or director who consistently “digs deep” to sustain and enhance the operations of the Fraser Valley Watersheds Coalition.*

**2021 Recipient:**

**David Urban**

FVWC Treasurer and longest standing director.



Gift provided by



David has been volunteering with the FVWC since 2007 (14 years!). In that time, he has provided constant counsel to all leadership staff. Quiet and humble he oversees the comings and goings of the financial stability of the organization and his unwavering commitment to the watersheds coalition is one worth celebrating!



# VALUING OUTSTANDING EFFORTS



## Slippery Salmon Award

Presented by Debora Soutar

*A recognition of a member, volunteer, partner, staff, contractor and/or director who, as luck would have, was able to escape from a slippery situation, unscathed and with a story to share! For, it is in these moments that memories are made!*

2021 Recipient:

Jim Taylor versus the Silverdale Wetland Beavers



Gift provided by THE PENNY



Jim has been a long-standing active volunteer in Mission, a director of Stave Valley Salmonid Enhancement Society and a past FVWC director. He has volunteered countless hours of his time (and his amazing wife, Terry's time) to enhance the Silverdale Creek Wetlands and the Stave River, with a particular focus on Salmon, Purple Martins and beavers...However, Jim and the beavers are "opposite engineers!" While the beavers continually build up their dams in the wetlands during the night, limiting salmon access into the wetlands, Jim and his machine are working during the days to undo the night crew progress. On one "day shift" Jim and his tools nearly went swimming into the creek as the beaver dam breached and down Jim went, topsy turvy into mud and sticks! Way to stay dedicated Jim! You are one heck of a match to the busy beavers of Mission.



# LEADERSHIP STAFF



Natashia Cox  
Program Director



Rachel Drennan  
Operations Manager



Winter Moon  
Field Crew Supervisor

# 2020-2021 FIELD STAFF



Bridgette Knowlan



Donovan Toews



Paige Smith



Renee Coghill





# THANK YOU BOARD OF DIRECTORS



Matt Foy  
Chair



Detmar Schwichtenberg  
Vice-Chair



David Urban  
Treasurer



Judy Lewis  
Secretary



Debora Soutar  
Director at Large



Bruce Clark  
Director at Large



John Vissers  
Director at Large



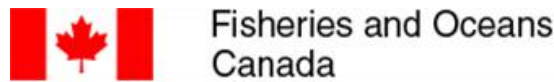
Christina Toth  
Director at Large



Geoff Hughes-Games  
Director at Large

# THANK YOU 2020-2021

## FINANCIAL CONTRIBUTORS & DONORS



**Wally Hall Jr.  
Steelhead Fishing  
Derby**



**HABITAT CONSERVATION  
TRUST FOUNDATION**



**HEALTHY  
WATERSHEDS  
INITIATIVE**

## COMMUNITY DONORS

### Watershed Program

Anonymous  
Canada Helps  
Benita Loughlin  
Geoff Hughes-Games  
Hank Roos  
Tomek Skowronski  
James Zou  
John Vissers  
Mitch Ferguson

Kelly Railton  
Peeranut Visetsuth  
Murray Brown  
Lara Volgyesi  
Alex Eng  
Michelle Rhodes  
Daniel Heffner  
Aric MacLaren

### Wally Hall Jr. Memorial Steelhead Fishing Derby

Steelhead Society of BC River Rats  
Fishing Derby  
Jose Lopez-Garcia  
Ian Moore  
Ellison Chen  
Mark Bond  
Adam Bolding-Jones  
Rafa Bonati

Jasen Wright  
Stuart George  
Edwin Chu



# THANK YOU 2021-2020

## COMMUNITY PARTNERS & VOLUNTEERS



*A.D.S. Bobcat & Excavating Services*

Thank you for your support

YEAR IN REVIEW  
2021

January 2022 | Issue 13



#1 45950 Cheam Avenue  
Chilliwack BC V2P 1N6  
[www.fvwc.ca](http://www.fvwc.ca)